

Introduction

- **About Mukogawa Women's University**
Mukogawa Women's University (MWU) consists of 13 schools with 21 departments, and 8 graduate schools. The number of students is the largest of all women's universities in Japan. We aim to cultivate female students who can contribute to society with "true intelligence", a "sensitive and broad minded-perspective", and a "spirit of consideration and dedication to others".
- **Short-Term Program**
The "Study in Japan" Program (SIJ) is an intensive program designed for full-time undergraduates. Students must be committed to learning Japanese language and culture, and be willing to participate fully in the program curriculum. Study in Japan is best suited for students for whom this is their first experience in Japan.
To fully immerse students in Japanese language and culture, participants will not only take language and culture classes, but also enjoy exciting field trips and a homestay with a Japanese host family. Through the SIJ Program, students are given the rare opportunity to experience the daily facets of Japanese life during the first weekend of their course.

Application Requirements

- Applicants must be enrolled in a MWU partner university and plan to be enrolled until at least July of the program year.
- Applicants with academic goals and records are favored.
- All Japanese Language Courses are conducted in Japanese. Therefore, applicants must have basic Japanese abilities such as using Hiragana, Katakana, and making simple sentences. Applicants should have at least Beginner level of Japanese. Students at the introductory level will not be accepted.
- All other courses are conducted in English. Therefore, a good understanding of English is recommended to participate in the SIJ program.

Program Description

Important Information

Program	Starts	Ends	Capacity	Require Level
Summer	Jun 20, 2026	July 11, 2026	10	Beginner ~ Intermediate

Sample Schedule

	Mon.	Tue.	Wed.	Thu.	Fri.	Sat.	Sun.
						Arrival Day	Free time
1 st week	Opening Ceremony Orientation Campus Tour	Japanese Class Kindergarten-Visit	Japanese Class Students Exchange	Japanese Class Culture Class	Japanese Class Homestay	Homestay	Homestay
2 nd week	Japanese Class Culture Class	Japanese Class Culture Class	Field Trip	Japanese Class Culture Class	Japanese Class Culture Class	Free time Field Trip (Optional)	Free time
3 rd week	Japanese Class Culture Class	Japanese Class Students Exchange	Field Trip	Japanese Class	Japanese Class Certificate Ceremony	Departure	

■ Japanese Language Class

The goal of the language courses is to improve each participant's listening, speaking, reading, and writing skills in Japanese. While participants should be realistic in that they will not become perfectly fluent during their short stay, their fluency can improve substantially through these intensive daily classes. Students will be placed into one of two levels, depending upon their individual proficiency. The language classes are intended for students who have completed an equivalent of first-and second-year Japanese language courses at the university level.

【 Placement Test 】

Participants will be placed into classes depending on the information given in their application and essay written in Japanese. On the first day of Japanese Language Class, they will take a placement test in the class. Student will be divided two classes as follows.

Class Placement

Level 1	Beginner	<ul style="list-style-type: none"> • ask and answer simple questions about their own hometown and family • talk about their experiences while in Japan • read and write words and phrases in hiragana and katakana as well as a number of kanji
Level 2	Intermediate	<ul style="list-style-type: none"> • read short articles in Japanese about language, customs and related cultural issues • write short essays using Japanese about their impressions of Japan • converse using daily expressions • use more than 200 kanji • use essential grammar when writing and speaking



■ Culture Class

Two intensive culture courses will be taught, one focusing on Japan's traditions, and another on modern Japan. These multi-faceted courses will comprise lectures, workshops, discussions, and field trips. Their purpose is to give students a broad yet intensive look at the development of Japanese culture. Students will have the opportunity to attend lectures and participate in workshops on such traditional Japanese arts as the following:



Shodo Calligraphy



Japanese Dance



Mochi Pounding



Cross-Cultural Communication Class

Some classes may not be available for your program. Photos are of past programs.

■ Field Trips

The Study in Japan program includes a regional field trip, so students can experience the beauty of Japan, as well as its history. Last year's trip included a one-day trip to Osaka/Kansai EXPO.



Kobe



EXPO Japan



Wagashi Making

■ Homestay

Participants will participate in a homestay during the first weekend of the program. Living with a Japanese family is an excellent way to experience Japanese culture and practice your Japanese beyond the classroom. The homestay fee is included in program.

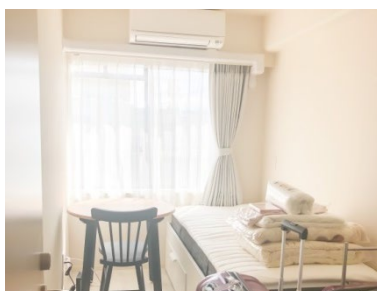


Accommodation

Teiwa-ryo	
Address	1-1-1 Higashinaruo-cho, Nishinomiya, Hyogo, 663-8132 Japan
Room Type	Single Room
Room Facilities	Desk, Chair, Bed, Closet, Air-conditioner, Free Wi-Fi
Common Facilities	Laundry, Kitchen, TV, Microwave, Bath & Shower, Air Conditioner
Remarks	No smoking, No parties, No visitors



In front of the dormitory building



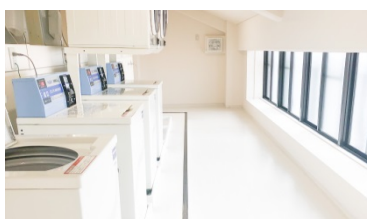
Single room



Living room



Kitchen



Laundry



Powder Room

※There is a possibility that the accommodation will be in a different dormitory.

Program Fee & Living Expenses

- Program Fee : 130,000JPY
- Payment Due : Apr 24, 2026

Program includes :

- *Tuition
- *Course materials
- *Field Trips
- *Transportation from the airport to the dorm on the arrival day when coming directly to MWU.
- *Dorm and Homestay Accommodation

Program Fee does not include :

- *Overseas travel insurance
- *Round-trip airfare
- *Transportation from the dorm on the departure day in Japan
- *Optional tours
- *Transportation costs in Japan
- *Meals
- *Fees for credit at the Participant's home college or university.

- Living Expenses

Living Expenses will vary depending on each student's individual lifestyle. Therefore, MWU requires all participants to purchase their own meals during the program. On-campus cafeterias provide a wide range of affordable meal options. As there are grocery stores and markets near the campus, you can also cook for yourself easily.

- Remarks

Information on payment methods will be given at the same time as the Announcement of Result.

Others

- Travel Arrangements

Participants will fly to and from Japan on the airlines and flights selected by the travel agent of the university to which the participant belongs. Participants must arrive on June 20. There will be someone at the airport to meet you (pick up time will be decided later). During the program, participants are restricted to travel within the Kansai (Osaka, Kyoto and Kobe and so on) region only. We ask that you respect this and other guidelines of the program. If you choose to stay in Japan after the program is completed, then all travel arrangements and accommodations after the program concludes become your sole responsibility.

- Insurance

Participants must obtain health and travel insurance covering their stay by themselves. The insurance policy must be covering at least the 22 days during of the program. Participants must submit proof of insurance before coming to Japan.

- VISA and Passport

A visa is not required for short-term study except for some countries. However, a passport is required, so any applicants without a valid passport should apply for one immediately.

- University Credit

Mukogawa Women's University will issue a certificate of completion for the SIJ Program. Each institution makes its own determinations for granting credits and grades for participants. Please consult your school's international program studies director, department chair, or other relevant advisor.

- Application

The program has a limited capacity. If we receive more than seven applications, participants will be selected based on recommendation letters and other application documents. The program will be cancelled if there are fewer than five participants.

How to Apply

Step 1. Prepare the application documents as follows.

< Application documents >

1. Application (PDF)
2. Two recommendation letters (PDF)
3. Transcript (PDF)
4. Passport data (PDF)
5. Profile photo data for student ID (JPEG)
6. Health and travel insurance certificate (PDF)

Step 2. Submit Application documents to the home college or university that applicant belongs.

The result will also be announced through the home college or university.

Program	Application accepting	Announcement of Result
Summer	January 7, 2026 ~ March 19, 2026	First week of April, 2026

*Based on Japan time (GMT+9)

*Individually sponsored applications and applications from those at non-partner universities will not be accepted.

*In the case that the number of applications exceeds program capacity, participants will be selected based on application documents.

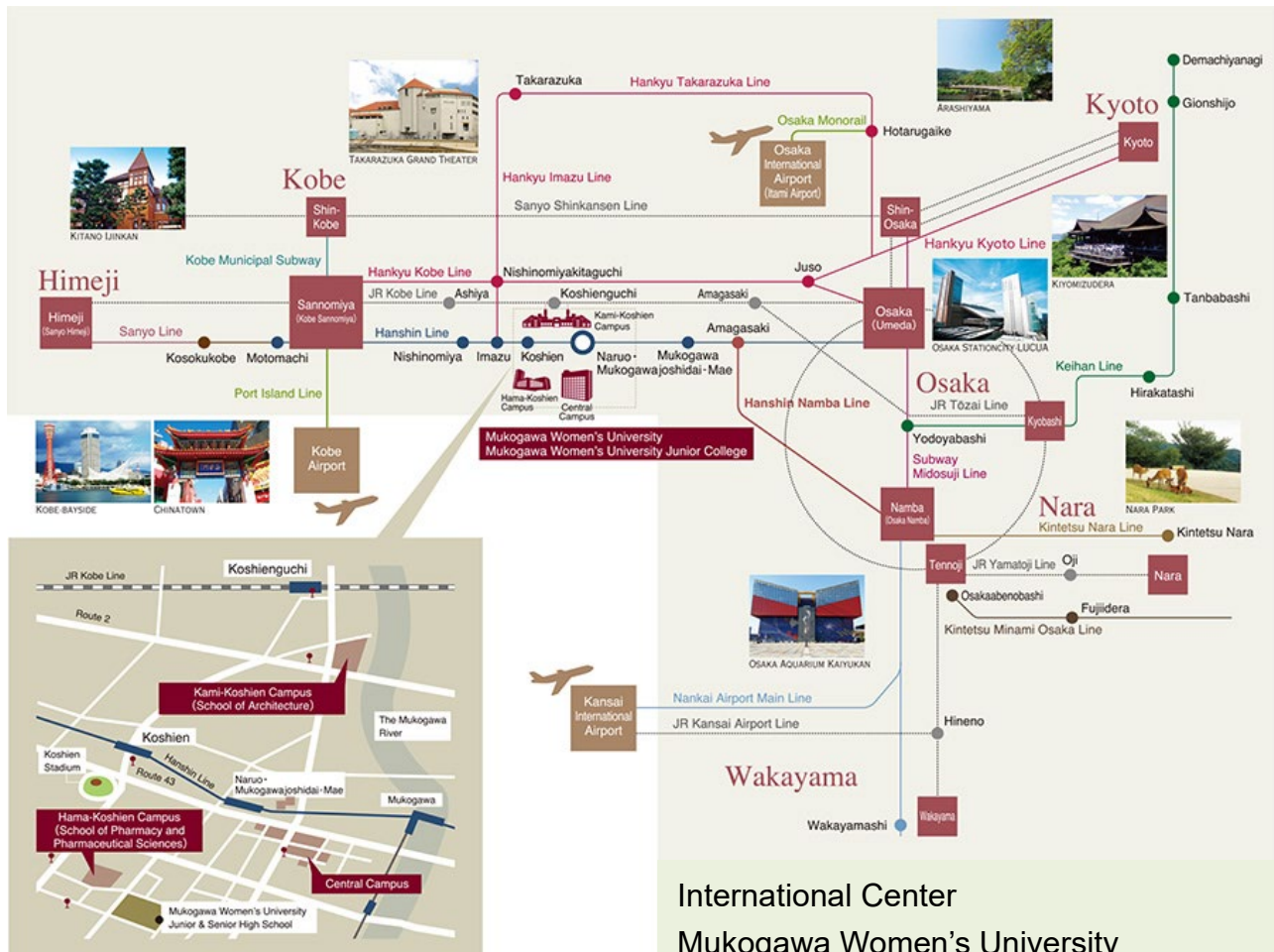
Step 3. After confirming that your payment has been received, an Acceptance Letter will be issued.

Comments from participants on the 2025 program

- I enjoyed every activity! and it was nice to share the ups and downs of being an short term international student with other people, some of whom I have made really close friendships. Everyone has been so nice and accomodating. Not to mention how much my Japanese has improved, I feel like I can actually talk to people now. I feel so happy and grateful that I was able to participate in this program!
- Omg there is so much to choose from!! This trip will be so memorable, and I feel like the things that stood out to me the most was my home stay. Yuki and her family where so fun to be with during that first weekend, and I was so excited to be with them even though I was quite tired. I felt bad about how tired I was.



Access to MWU



International Center

Mukogawa Women's University

6-46 Ikebiraki-cho, Nishinomiyachi, Hyogo,
663-8558 JAPAN

E-mail: kok12@mwu.jp

TEL: +81-798-45-3523 9:00-17:00(GMT+9:00)