

## Introduction

### ■ About Mukogawa Women's University

Mukogawa Women's University (MWU) consists of 7 schools with 14 departments, a junior college division with 7 departments, 6 master's courses with 12 research majors, and a one year graduate course. The number of students marks the highest of all women's universities in Japan, which makes us the biggest women's university in Japan. We aim to cultivate female students who can contribute to the society with "true intelligence", "sensitive and broad minded", and "spirit of consideration of and dedication to others".

### ■ Short-term program

'Study in Japan' Program (SIJ) is carried out for full-time undergraduate to participate in this intensive program. Students must be committed to learning Japanese language and culture, and be willing to participate fully in the program curriculum. Study in Japan is best suited for students for whom this is their first experience in Japan.

To fully immerse students in Japanese language and culture, participants will not only take language and culture classes, but also enjoy exciting field trips and a homestay with a Japanese host family. Through the Study in Japan Program, students are given the rare opportunity to experience daily facets of Japanese life during the first weekend of their course.

## Application Requirements

- Applicants must be enrolled in MWU's partner university and planning to continue study through at least July this year.
- Applicants who have aims for academic purposes and records are favored.
- Applicants must have basic Japanese abilities such as using Hiragana, Katakana, or making simple sentences. It is desirable that applicants have at least elementary level. Introductory level will not be accepted.

## Program Description

### ■ Important Information

| Program | Starts       | Ends         | Capacity | Require Level |
|---------|--------------|--------------|----------|---------------|
| Summer  | Jun 13, 2020 | Jul 11, 2020 | 7        | Elementary    |

### ■ Sample Schedule

|                      | Mon.   | Tue.                                | Wed.                                | Thu.                            | Fri.                                   | Sat.                         | Sun.     |
|----------------------|--|-------------------------------------|-------------------------------------|---------------------------------|--|------------------------------|----------|
|                      |  |                                     |                                     |                                 |  | Arrival Day                  | Off      |
| 1 <sup>st</sup> week | Opening Ceremony<br>Orientation<br>Campus Tour | Japanese Class<br>Kindergarten      | Japanese Class<br>Students Exchange | Japanese Class<br>Culture Class | Japanese Class<br>Homestay             | Homestay                     | Homestay |
| 2 <sup>nd</sup> week | Japanese Class<br>Culture Class                | Japanese Class<br>Culture Class     | Field Trip                          | Japanese Class<br>Culture Class | Japanese Class<br>Culture Class        | Off<br>Field Trip (Optional) | Off      |
| 3 <sup>rd</sup> week | Japanese Class<br>Culture Class                | Japanese Class<br>Students Exchange | Field Trip                          | Japanese Class                  | Japanese Class<br>Certificate Ceremony | Departure                    |          |

■ Japanese Language Class

The goal of the language courses will be to improve each participant's listening, speaking reading, and writing skills in Japanese. While participants need to be realistic that they will not become fluent within their short stay, their fluency can improve substantially in these intensive daily classes. Students will be divided into one of two levels, depending upon their individual level of proficiency. The language classes will be geared for students who have completed first and second year Japanese language training.

【 Placement Test 】

Participants will be placed into classes depending on the information given in their application and essay written in Japanese. On the first day of Japanese Language Class, they will take a placement test in the class. Student will be divided two classes as follows.

Class Placement

|         |              |   |
|---------|--------------|---|
| Level 1 | Elementary   | <ul style="list-style-type: none"> <li>ask and answer simple questions about their own hometown and family, and talk about their experiences while in Japan</li> <li>read and write words and phrases in hiragana and katakana as well as a number of kanji</li> </ul>  |
| Level 2 | Intermediate | <ul style="list-style-type: none"> <li>read short articles in Japanese about language, customs and related cultural issues</li> <li>write short articles using Japanese about their impressions of Japan</li> <li>converse using daily expressions</li> <li>use more than 200 kanji</li> <li>use essential grammar when writing and speaking</li> </ul> |



■ Culture Class

Two intensive culture courses will be taught, one focusing on Japan's traditions, the other on modern Japan. These multi-faceted courses will comprise of lectures, workshops, discussions, and field trips. Their purpose is to give students a broad but intensive look at the development of Japanese culture. Students have the opportunity to attend lectures and participate in workshops on such traditional Japanese arts as follows.



Shodo Calligraphy



Japanese Dance



Mochi Pounding



Cross-Cultural Communication Class

Some classes may not be available for your program. Photos are some parts of past programs.

■ Field Trip

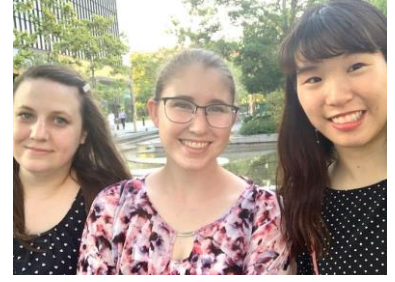
The Study in Japan program includes a regional field trip, so students can experience the beauty of Japan, as well as its history. This year's trip includes one-day trip to Nara.



Nara



Universal Studio Japan



Umeda

Some classes may not be available for your program. Photos are some parts of past programs.

■ Homestay

Participants will join the homestay program on first weekend. Living with a Japanese family is an excellent way to experience Japanese culture and practice your Japanese beyond the classroom. The fee is included in program fee.

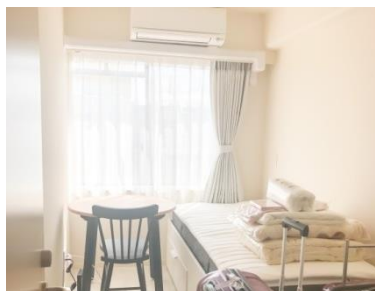


Accommodation

| Teiwa-ryo         |   |
|-------------------|---|
| Address           | 1-1-1 Higashinaruo-cho, Nishinomiya, Hyogo, 663-8132 Japan      |
| Room Type         | Single Room   |
| Room Facilities   | Desk, Chair, Bed, Closet, Free Wi-Fi                            |
| Common Facilities | Laundry, Kitchen, TV, Microwave, Bath & Shower, Air conditioner |
| Remarks           | No Smoking, No Parties, No Visitors                             |



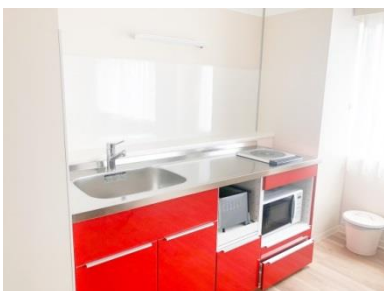
In front of the dormitory building



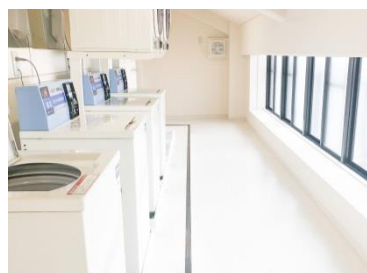
Single room



Living room



Kitchen



Laundry



Powder Room

## Program Fee & Living Expenses

- Program Fee : 80,000JPY
- Payment Due : Apr 27, 2020

Program includes :

- \*Tuition
- \*Course materials
- \*Field Trips
- \*Accommodation

Program Fee does not include :

- \*Overseas travel accident insurance
- \*Round-trip airfare
- \*Optional tours
- \*Transportation costs in Japan
- \*Meals (Approx. JPY15,000 per week)
- \*Fees for credit at the Participant's home college or university.

- Living Expenses

Living Expenses will vary depending on each student's individual lifestyle, however MWU requires all participants to purchase your own meals during the program. On-campus cafeterias provide a wide range of affordable meal options. As there are grocery stores and markets near the campus, you can cook yourself easily.

- Remarks

\* Information on payment methods will be given at the same time as Announcement of Result.

## Others

- Travel Arrangements

Participants will fly to and from Japan on the airlines and flights selected by the travel agent of the university the students belong to. Students must arrive on June 20. During the program, participants are only allowed to travel within Kansai region. We ask that you respect the guidelines in this program. However, if you stay in Japan after the program is completed, then all travel arrangements and accommodations are your sole responsibility.

- Insurance

Participants need to take out health insurance for your stay by themselves. The insurance policy must be at least for 22 days. Participants need to submit the proof of the insurance before coming to Japan.

- VISA

A visa is not required for short-term study however any applicants without a valid passport should apply or one immediately.

- Credit

Mukogawa Women's University will issue a certificate of completion for the Study in Japan Program. Each institution will make its own decision for granting credits and grades for participants. Please see your school's international program studies director or department chair or advisor.

## How to Apply

Step 1. Prepare the application documents as follows.

< Application documents >

1. Application (PDF)
2. Transcript (PDF)
3. Passport data (PDF)
4. Two recommendation letters (PDF)
5. Face photo data for student ID (JPEG)

Step 2. Submit Application documents to the home college or university that applicant belongs.

The result will also be announced through the home college or university.

| Program | Application accepting       | Announcement of Result |
|---------|-----------------------------|------------------------|
| Summer  | Jan 15, 2020 ~ Mar 24, 2020 | April 5, 2020          |

\*based on Japan time (GMT+9)

\*Individual application or application from except the partner university will not be accepted.

\*In case of too many applications, we will hold a student selection.

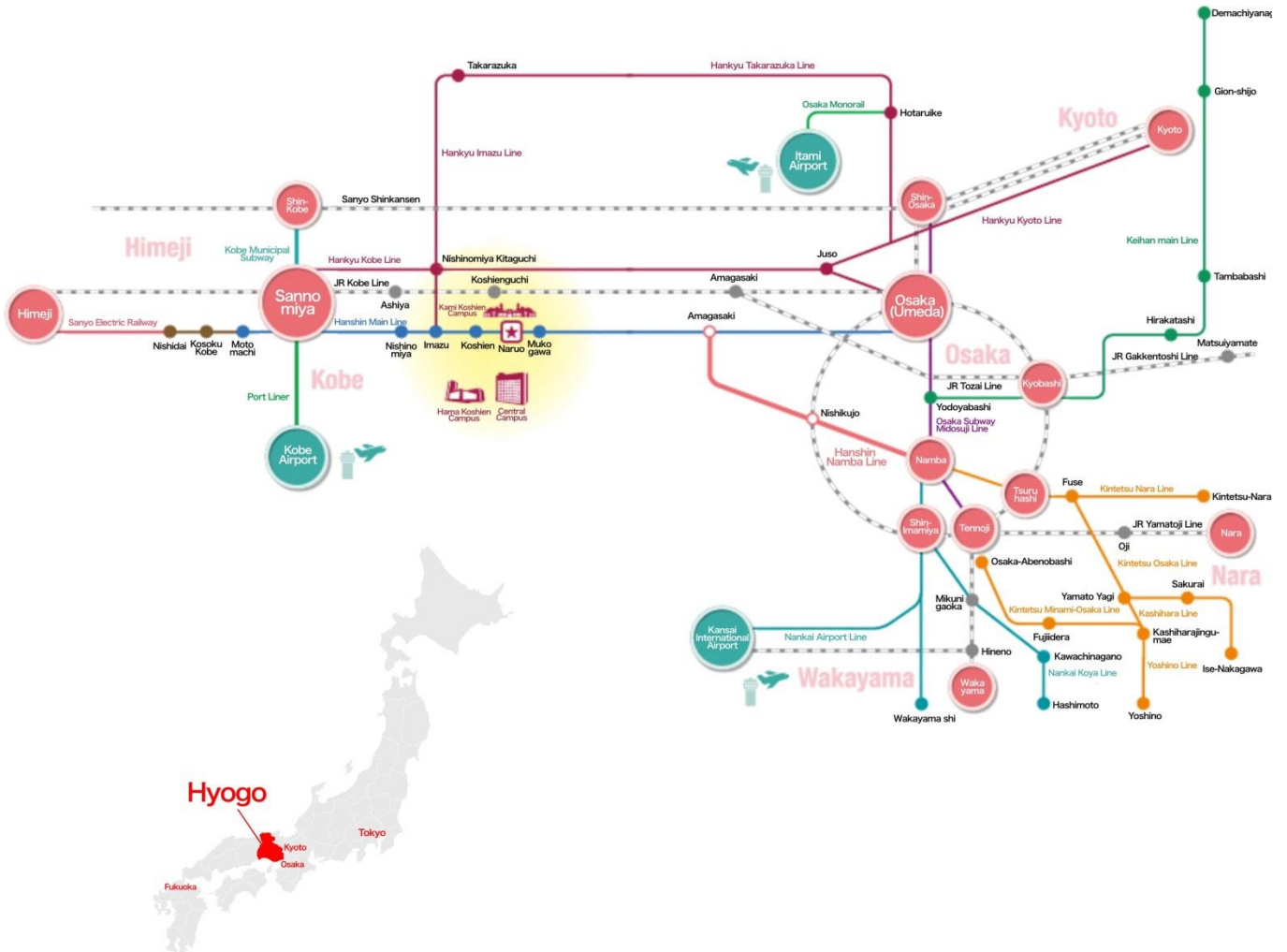
Step 3. After making a confirmation of your payment, Acceptance Letter will be sent.

Comments of participants in 2019

- I also feel like I have grown as a person in the short time of being here, believe it or not. I used to be terrified of speaking Japanese in front of native speakers and would not even dare to try sometimes. Now, I am approaching students on my own and speaking with them in my second language. For me this is a huge accomplishment, and I could not do it without all the help and support I got from students and staff. Nothing feels better than being able to update my family on all my new accomplishments, knowledge, and fun experiences.
- Combined with the Japanese classes I took at Mukogawa, I felt a huge improvement in my spoken Japanese. What I really appreciated about the SIJ program was that it included opportunities such as field trips to learn about Japanese culture. Going to Nara and Himeji were two of the highlights of the program, especially as an American since the United States is relatively young, it was a surreal experience to walk in and witness buildings older than my country.



Access to MWU



International Center Mukogawa Women’s University

6-46 Ikebiraki-cho, Nishinomiya, Hyogo, 663-8558 JAPAN  
 E-mail: kok12@mwu.jp  
 TEL: +81-798-45-3523 9:00-17:00(GMT+9:00)